

Sweet Adelines International
Sequoia-Pacific, Region 11
Fall Festival
November, 2011

The Eleven Chords Of Barbershop Harmony

Presented by
Joan Adler, IMAP Candidate
Arranger Education Chair

SCALES AND KEY SIGNATURES

The **MAJOR SCALE** is comprised of eight consecutive tones in alphabetical order, from "do" to "do" one octave higher.

Look at a piano-style keyboard. If you begin at C and go up the keyboard playing the white keys, you will see that all of the tones in the C scale are separated by a whole step with the exception of E to F and B to C, which are half steps.

The pattern for the steps in a major scale is:

Whole whole half whole whole whole half

Another way to look at a major scale is to divide the eight notes into two groups of four notes, called tetrachords. Each tetrachord has a pattern of whole - whole - half, and the two tetrachords are joined by a whole step.

C Major Scale

Letter Name	C	D	E	F	G	A	C	C
Scale Step	1	2	3	4	5	6	7	8
Solfeggio	do	re	mi	fa	sol	la	ti	dc

<----- Tetrachord -----> <----- Tetrachord ----->

KEY SIGNATURES

Key of C - no sharps or flats. Memorize one flat = key of F. For other key signatures with flats, the second to the last flat names the key.

C F B \flat E \flat A \flat D \flat E \flat G \flat

Key signatures with sharps are identified by counting up one half step from the last sharp.

G D A E B F \sharp

WRITE SCALES IN BOTH CLEFS IN THE FOLLOWING MAJOR KEYS:

C

A grand staff consisting of two five-line staves. The top staff has a treble clef and the bottom staff has a bass clef. A brace on the left side groups the two staves together. The staves are empty, intended for writing the C major scale.

Bb

A grand staff consisting of two five-line staves. The top staff has a treble clef and the bottom staff has a bass clef. A brace on the left side groups the two staves together. The staves are empty, intended for writing the Bb major scale.

G

A grand staff consisting of two five-line staves. The top staff has a treble clef and the bottom staff has a bass clef. A brace on the left side groups the two staves together. The staves are empty, intended for writing the G major scale.

F

A grand staff consisting of two five-line staves. The top staff has a treble clef and the bottom staff has a bass clef. A brace on the left side groups the two staves together. The staves are empty, intended for writing the F major scale.

Eb

A grand staff consisting of two five-line staves. The top staff has a treble clef and the bottom staff has a bass clef. A brace on the left side groups the two staves together. The staves are empty, intended for writing the Eb major scale.

Eleven chords of Barbershop Harmony

The image displays two musical staves, each with six measures. The first staff illustrates six chords: MAJOR TRIAD, BARBERSHOP 7th, BARBERSHOP 9th, MAJOR 6th, MAJOR 7th, and MAJOR 9th. The second staff illustrates five chords: MINOR TRIAD, MINOR 6th, MINOR 7th, DIMINISHED, and AUGMENTED. Each chord is represented by a set of notes on a treble clef staff.

The Eleven Chords Used In Barbershop Harmony

The following is a listing of the eleven chords used in barbershop harmony. Use the name of the chord as the root or first scale step and build chords as follows:

CHORDS CONSTRUCTED ON THE MAJOR TRIAD

1. MAJOR TRIAD = 1ST AND 3RD scale step + 5th scale step
Example: C + E + G
2. BARBERSHOP SEVENTH = 1 + 3 + 5 + 7b (also called dominant seventh)
Example: C + E + G + Bb
3. BARBERSHOP NINTH = 1 + 3 + 5 + 7b + 9 (One tone must be omitted; it is usually the root but may be the fifth) Example: C + E + G + Bb + D — C or G will be omitted
4. MAJOR SIXTH = 1 + 3 + 5 + 6
Example: C + E + G + A
5. MAJOR SEVENTH = 1 + 3 + 5 + 7
Example: C + E + G + B
6. MAJOR NINTH = 1 + 3 + 5 + 7 + 9 The seventh is always omitted
Example C + E + G + B + D (B will be omitted)

CHORDS CONSTRUCTED ON THE MINOR TRIAD

1. MINOR TRIAD = 1 + 3b + 5
Example C + Eb + G
2. MINOR SIXTH = 1 + 3b + 5 + 6
Example C + Eb + G + A
3. MINOR SEVENTH = 1 + 3b + 5 + 7b
Example C + Eb + G + Bb

SYMMETRICAL CHORDS

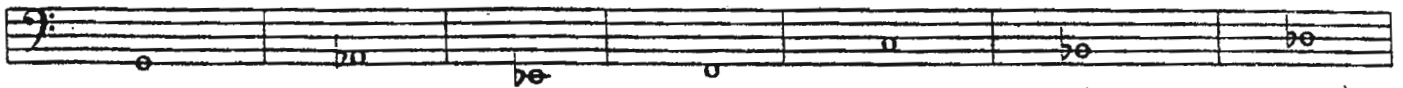
1. DIMINISHED = 1 + 3b + 5b + 7bb (7bb is usually written as 6 to avoid double flat)
Example C + Eb + Gb + Bbb (written C + Eb + Gb + A)
2. AUGMENTED = 1 + 3 + 5#
Example C + E + G#

The Eleven Chords of Barbershop

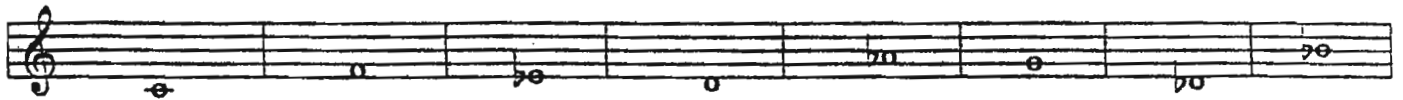
1. Build a major triad on the following roots: (1 3 5)



2. Build a barbershop seventh on the following roots: (1 3 5 7b)



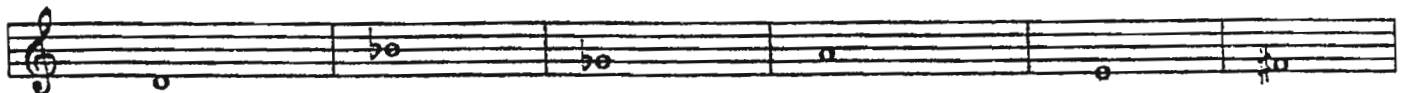
3. Write out all five notes of a barbershop ninth chord using the following roots: (1 3 5 7b 9)



4. Build a barbershop ninth chord beside the following roots, omitting the root: (3 5 7b 9)



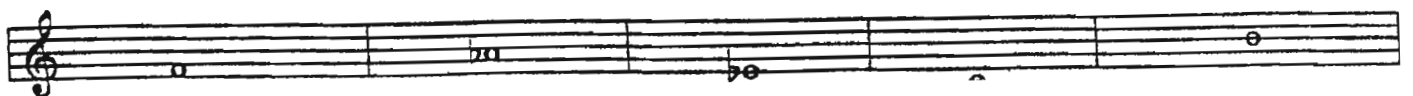
5. Build a barbershop ninth chord using the following roots, but omit the fifth: (1 3 7b 9)



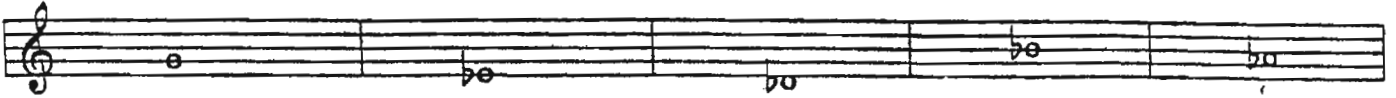
6. Build a major sixth chord on the following roots: (1 3 5 6)



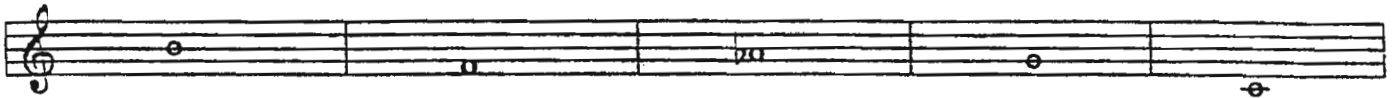
7. Build a major seventh chord on the following roots: (1 3 5 7)



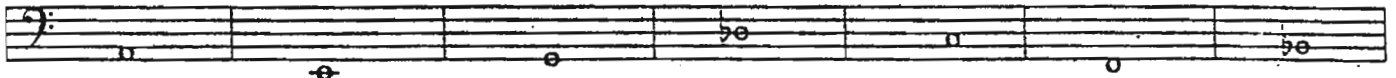
8. Build a major ninth chord on the following roots: (1 3 5 7 9)



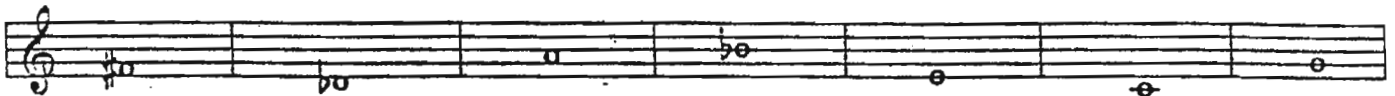
9. Build a major ninth chord on the following roots with seventh omitted. (1 3 5 9)
(Note: Seventh always omitted in barbershop.)



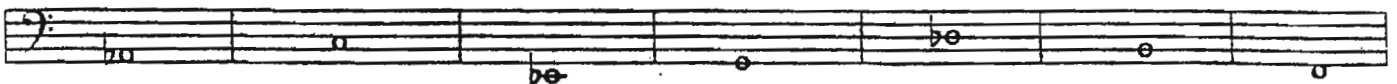
10. Build a minor triad on the following roots: (1 3b 5)



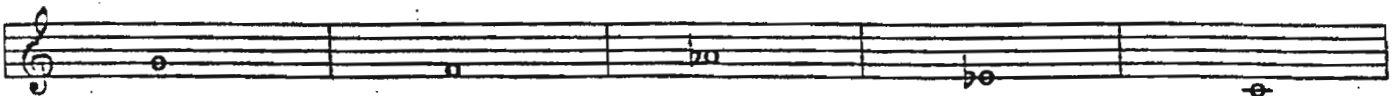
11. Build a minor sixth chord on the following roots: (1 3b 5 6)



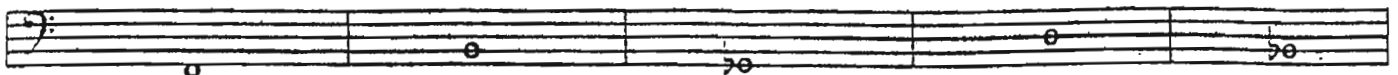
12. Build a minor seventh chord on the following roots: (1 3b 5 7b)



13. Build an augmented triad on the following notes: (1 3 5#)



14. Build a diminished chord, using the following notes. "Spell" the chord in the way that will be easiest for the singer to understand (avoid the double flat).



1. Name the chord and circle the root:

Musical notation for exercise 1. Treble clef, F major key signature. Chord symbols: F7, F7, F7, F7, F7, F7, F7, F7. The root note F is circled in the first chord.

2. Name the chord and circle the fifth:

Musical notation for exercise 2. Treble clef, C major key signature. Chord symbols: C7, C7, C7, C7, C7, C7, C7, C7. The fifth note G is circled in the first chord.

3. Name these chords:

Musical notation for exercise 3. Treble clef, D major key signature. Chord symbols: dim, dim, dim, dim, dim, dim, dim, dim.

4. Name these chords. What note is missing and what is its place in the chord?

Musical notation for exercise 4. Treble clef, F major key signature. Chord symbols: F M9, F M9, F M9, F M9, F M9, F M9. The missing note is the second degree (G) in the upper voice.

CORRECT THE CHORD BY CHANGING ONE NOTE ONLY

1 C

2 C7

3 Bb6

Measure 1: Treble clef, 4/4 time, C major chord (C4, E4, G4). Bass clef, 4/4 time, C major chord (C3, E3, G3).
Measure 2: Treble clef, 4/4 time, C7 chord (C4, E4, G4, Bb4). Bass clef, 4/4 time, C7 chord (C3, E3, G3, Bb3).
Measure 3: Treble clef, 4/4 time, Bb6 chord (Bb4, D4, F4, Ab4). Bass clef, 4/4 time, Bb6 chord (Bb3, D3, F3, Ab3).

4 EbM7

5 AbM9

6 C9

Measure 4: Treble clef, 4/4 time, EbM7 chord (Eb3, Gb3, Bb3, D4). Bass clef, 4/4 time, EbM7 chord (Eb2, Gb2, Bb2, D3).
Measure 5: Treble clef, 4/4 time, AbM9 chord (Ab3, C4, Eb4, F4, Gb4). Bass clef, 4/4 time, AbM9 chord (Ab2, C3, Eb3, F3, Gb3).
Measure 6: Treble clef, 4/4 time, C9 chord (C3, Eb3, F3, Gb3, Bb3). Bass clef, 4/4 time, C9 chord (C2, Eb2, F2, Gb2, Bb2).

7 Gm

8 Fm6

9 Gm7

Measure 7: Treble clef, 4/4 time, Gm chord (G3, Bb3, D4). Bass clef, 4/4 time, Gm chord (G2, Bb2, D3).
Measure 8: Treble clef, 4/4 time, Fm6 chord (F3, Ab3, C4, Eb4). Bass clef, 4/4 time, Fm6 chord (F2, Ab2, C3, Eb3).
Measure 9: Treble clef, 4/4 time, Gm7 chord (G3, Bb3, D4, F4). Bass clef, 4/4 time, Gm7 chord (G2, Bb2, D3, F3).

10 DIM

11 AUG

Measure 10: Treble clef, 4/4 time, DIM chord (Eb3, Gb3, Bb3). Bass clef, 4/4 time, DIM chord (Eb2, Gb2, Bb2).
Measure 11: Treble clef, 4/4 time, AUG chord (A3, C#4, E4). Bass clef, 4/4 time, AUG chord (A2, C#3, E3).